

MetaTrader 4 Deposit Limit Plugin

Introduction

The Deposit Limit plugin is a useful plugin which limits the designated manager account's ability to deposit into trading client's account operation. Each manager accounts are deposited with a usable balance that it can utilize and limit at. Each deposit amount made by the manager into trading client's accounts is taken off the balance of the manager account and each deposit transaction is stamp into the history journal.

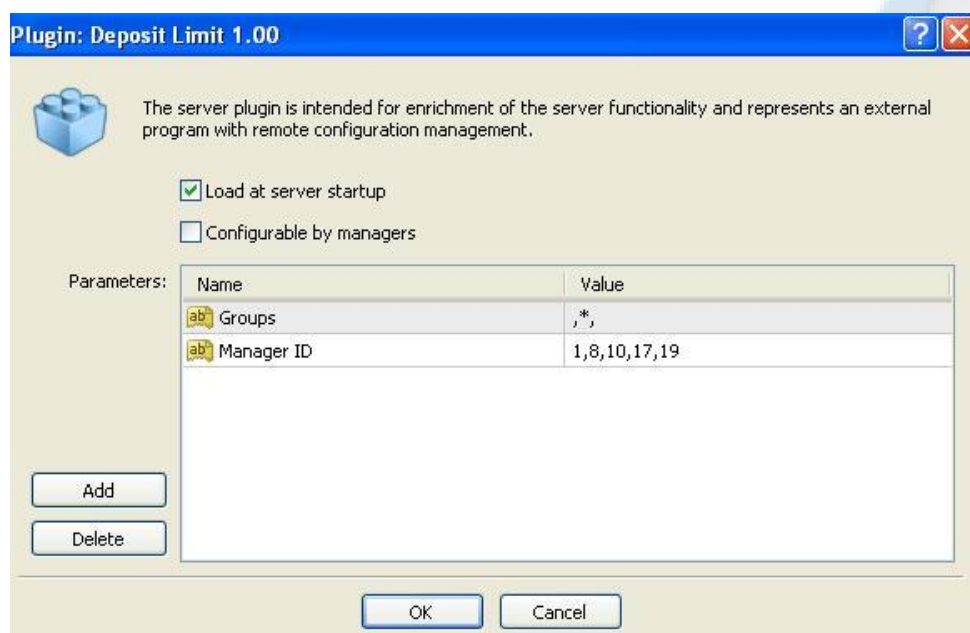
Plugin Installation

To install the plugin, the MetaTrader Server 4 program has to be stopped temporary before copying the DepositLimit.dll file into the "MetaTraderServer4/plugin" in the server root directory.

1. To stop the server, click on Start > Administrative Tools > Services.
2. Under the Services window, look for MetaTrader Server 4 and click it.
3. On the General tab, under Service status, click on the "Stop" button and wait for the MetaTrader server to stop.
4. Transfer/Copy the DepositLimit.dll file into the server root directory "plugin" folder.
5. Go back to Services window, click "Start" button to start the MetaTrader Server 4 program.

Plugin Configuration

After installation of plugin, it is necessary to configure its settings.



Parameter	Description
Groups	Groups processed by the DepositLimit plugin. The groups can be listed using templates. For example, demo* - all demo groups, !real,* - all groups except for the real ones, demoforex-usd , demoforex-jpy - only groups named demoforex-usd and demoforex-jpy, respectively.
Manager ID	The working Manager ID to monitor. Manager ID not included here will have unlimited deposit limits.

After configuration of the plugin, the MetaTrader Server 4 program has to be restarted for the new configuration to take effect. To restart, look to the top left of the MT Administrator 4 program and click it.

Working with the plugin

Each manager can be limited by the amount of balance it has. The manager account must first be deposited with the amount that it can maximum work with. A manager account with the balance of 0 (zero) is not able to carry out any deposit action.

