

## MetaTrader 4 Auto-Lock Plugin

### Introduction

The Auto Lock plugin is intended to overwrite the default Stop-Out procedure of the MetaTrader 4 system and fully hedge the trading account's open positions when it reaches the Stop-Out level.

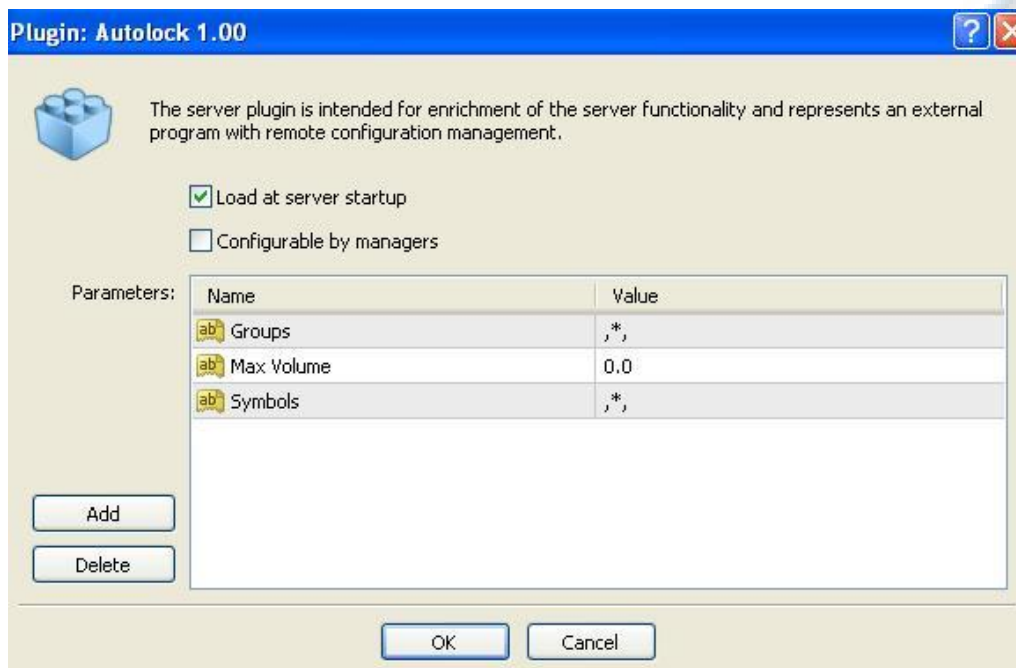
### Plugin Installation

To install the plugin, the MetaTrader Server 4 program has to be stopped temporary before copying the autolock.dll file into the "MetaTraderServer4/plugin" in the server root directory.

1. To stop the server, click on Start > Administrative Tools > Services.
2. Under the Services window, look for MetaTrader Server 4 and click it.
3. On the General tab, under Service status, click on the "Stop" button and wait for the MetaTrader server to stop.
4. Transfer/Copy the autolock.dll file into the server root directory "plugin" folder.
5. Go back to Services window, click "Start" button to start the MetaTrader Server 4 program.

### Plugin Configuration

After installation of plugin, it is necessary to configure its settings.



Parameter	Description
Groups	Groups processed by the Autolock plugin. The groups can be listed using templates. For example, demo* - all demo groups, !real,* - all groups except for the real ones, demoforex-usd, demoforex-jpy - only groups named demoforex-usd and demoforex-jpy, respectively.
Symbols	List of symbols to be processed by the Autolock plugin. The symbols can be listed using templates. For example, USD* - all symbols starting with USD, !SILVER,!GOLD,* - all symbols except for gold and silver.
Max Volume	Maximal amount of lots for a trade to be processed by the Autolock plugin. The default value is 0 where the maximum volume of trade is taken into account.

After configuration of the plugin, the MetaTrader Server 4 program has to be restarted for the new configuration to take effect. To restart, look to the top left of the MT Administrator 4 program and click it.

### Working with the plugin

The Autolock plugin will monitor the Stop Out level set under each groups and executes according to the level set.

